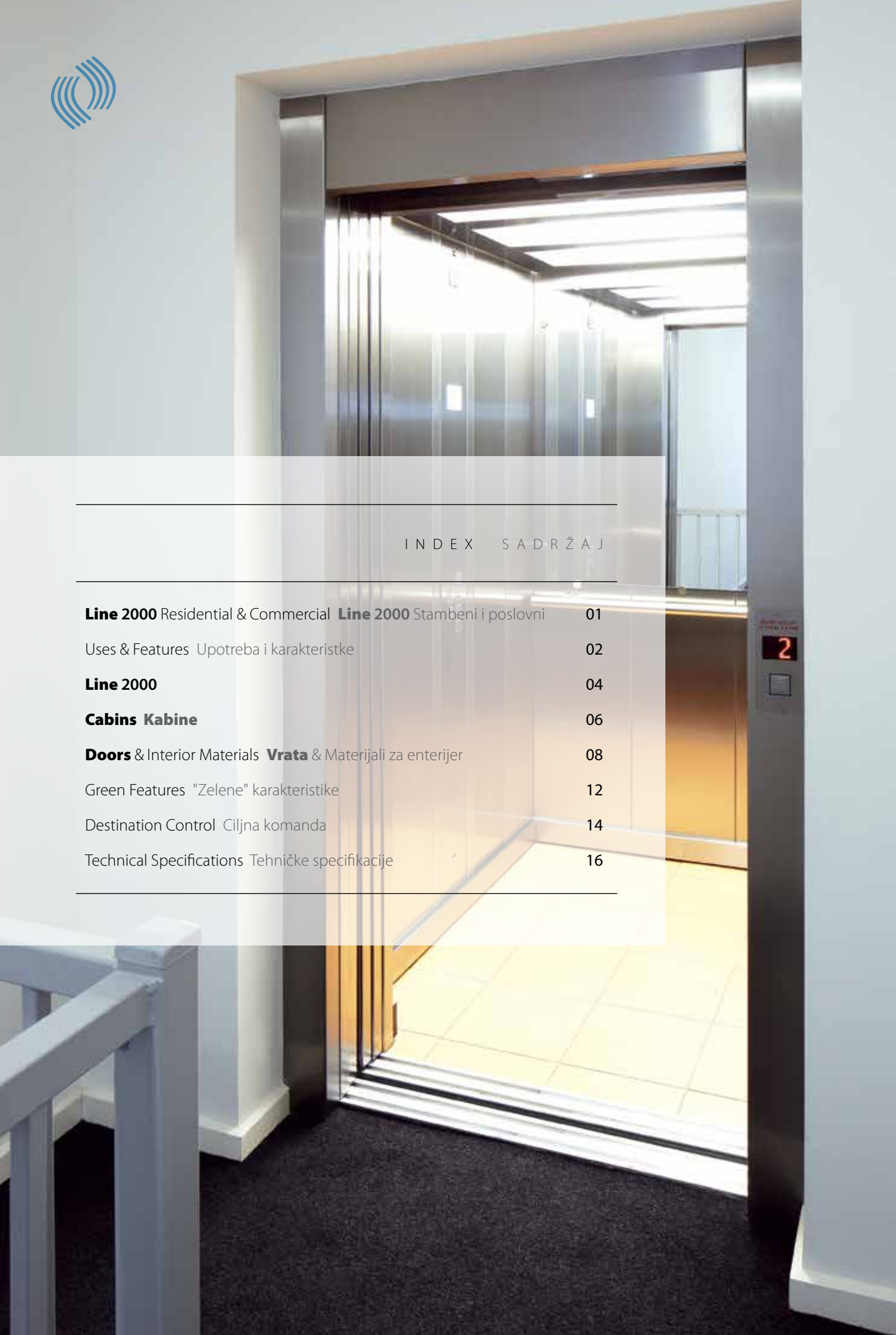




Line 2000
Residential & Commercial | Stambeni i poslovni





INDEX SADRŽAJ

Line 2000 Residential & Commercial	Line 2000 Stambeni i poslovni	01
Uses & Features	Upotreba i karakteristike	02
Line 2000		04
Cabins Kabine		06
Doors & Interior Materials	Vrata & Materijali za enterijer	08
Green Features	"Zelene" karakteristike	12
Destination Control	Ciljna komanda	14
Technical Specifications	Tehničke specifikacije	16

Line 2000

RESIDENTIAL & COMMERCIAL

STAMBENI I POSLOVNI

ADVANTAGES

Outstanding ride quality

Line 2000 was designed to ensure both high quality and ride comfort. The low levels of noise and car vibrations fulfill even the most strict requirements.

Safety

Feel safe with the solid **Line 2000** that guarantees maximum safety.

PREDNOSTI

Izvanredan kvalitet vožnje

Line 2000 je dizajniran tako da obezbedi i visok kvalitet i odličan komfor vožnje. Nizak nivo buke i vibracija kabine zadovoljavaju čak i najstrože zahteve.

Bezbednost

Osećajte se bezbedno sa pouzdanim liftom **Line 2000** koji garantuje maksimalnu bezbednost.



Ease of installation

Designed for ease of installation and use, providing spatial efficiency and reliability.

Eco-friendly-Green

Regeneration systems are available to provide excellent ride quality while reducing energy up to 60%.

Design

Unique tailor made design options, customised according to your needs in order to perfectly fit in your space.

Fast delivery

Place your order and get your products in short delivery times.

Jednostavnost montaže

Dizajniran za jednostavnu montažu i upotrebu pruža izuzetnu efikasnost i pouzdanost.

Ekološki-"zeleni" lift

Mogu se koristiti sistemi za regeneraciju koji omogućavaju odličan kvalitet vožnje uz smanjenje potrošnje energije do 60%.

Dizajn

Jedinstvena dizajnerska rešenja, prilagodjena vašim potrebama kako bi se savršeno uklopila u vaš prostor.

Brza isporuka

Dostavite svoju porudžbinu i očekujte isporuku u kratkom vremenskom roku.

KLEEMANN Line 2000

VERSATILITY OF USES

KLEEMANN uses its expertise and wide technical know-how to ensure high technology performance. It provides products for all types of passenger and freight lifts. Insuperable design and unique solutions combined perfectly to meet your needs.

RAZNOVRSNOST UPOTREBE

KLEEMANN koristi svoje znanje i raznovrsne tehničke veštine kako bi obezbedio visok tehnološki učinak. Obezbedjuje proizvode za sve tipove putničkih i teretnih liftova. Neprevazidjeni dizajn i jedinstvena rešenja savršeno se dopunjuju da zadovolje vase potrebe



Hospitals
Bolnice



Shopping Malls
Tržni centri



Hotels
Hoteli



Business Buildings
Poslovne zgrade



Apartment buildings
Stambene zgrade

Uses & Features Upotreba i karakteristike



Railway stations
Železničke stanice



Universities
Univerziteti



Airports
Aerodromi



Line 2000

Line 2000 is the ideal traction MRL solution for rated loads 375 - 1000 kg. It is equipped with KLEEMANN premium quality gearless motor and a state of the art inverter that enables outstanding ride quality, minimisation of sound levels and very low energy consumption. It features 2:1 suspension and speed up to 1,6 m/s. Especially designed to achieve reduced costs, Line 2000 is a perfect value for money solution.

Line 2000 je idealno rešenje za električni lift bez mašinske kućice prostorije (MRL) za nazivne nosivosti od 375 - 1000 kg. Opremljen je sa KLEEMANN bezreduktorskim motorom visokog kvaliteta i inverterom koji obezbeđuje izvanredan kvalitet vožnje, minimalizaciju nivoa buke i veoma malu potrošnju energije. Karakterišu ga 2:1 sistem vešanja i brzina do 1,6 m/s. Specijalno dizajniran da bi se postiglo smanjenje troškova, Line 2000 je predstavlja perfektno izbalansiran odnos kvaliteta i cene.



Line 2000 is now also available with Machine Room (MR) option.

Line 2000 je sada dostupan i u varijanti sa mašinskom prostorijom (MR).

For more information contact KLEEMANN Liftovi at: office@kleemann.rs

Za više informacija kontaktirajte KLEEMANN Liftove na: office@kleemann.rs

TECHNICAL ADVANTAGES
TEHNIČKE PREDNOSTI

Narrow controller suitable for installation within the door frame for space saving

Uzani kontroler pogodan za montažu u štoku vrata radi uštede prostora



2:1 traction galvanised car sling. Finite Elements Methods used for structural integrity analysis.

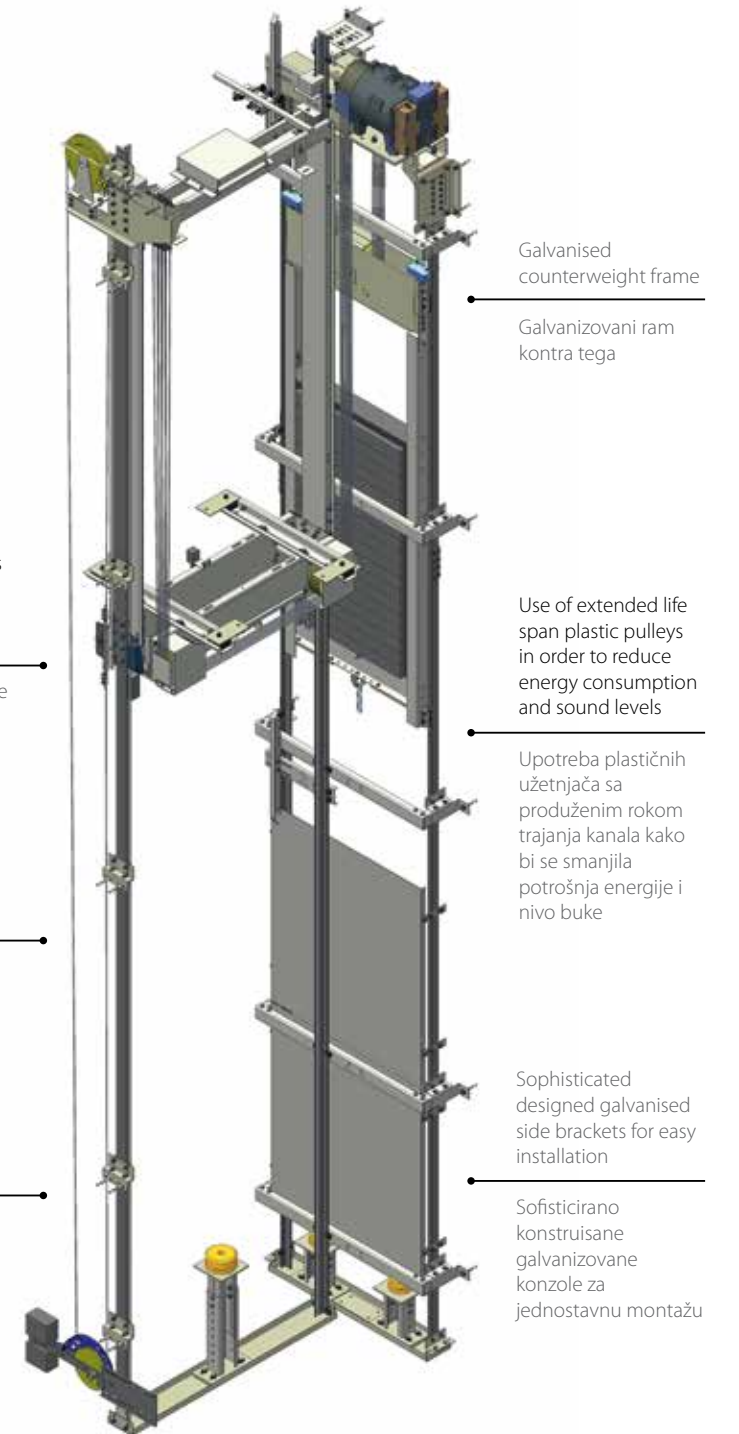
Galvanizovani ram kabne za 2:1 sistem vešanja. Metoda konačnih elemenata za proračun nosećih konstrukcija

Safety gear with progressive movement

Hvatački uređaj sa postupnim dejstvom

New guide shoes with rubber dampening elements for better ride quality

Novi klizači za šine sa gumenim ulošcima za bolji kvalitet vožnje



Galvanised counterweight frame

Galvanizovani ram kontra tega

Use of extended life span plastic pulleys in order to reduce energy consumption and sound levels

Upotreba plastičnih užetnjača sa produženim rokom trajanja kanala kako bi se smanjila potrošnja energije i nivo buke

Sophisticated designed galvanised side brackets for easy installation

Sofisticirano konstruisane galvanizovane konzole za jednostavnu montažu



Walls: Stainless Steel Satin
Ceiling: 010
 Stainless Steel Satin
Floor: 6768 Griffon
Handrail: K2 Stainless Steel Mirror
Mirror: Half Height / Full Width

Stranice: Satinirani Inox
Plafon: O10
 Satinirani Inox
Pod: 6768 Griffon
Rukohvat: K2 Sjajni inox
Ogledalo: Polovina visine/cela širina



Walls: Skinplate PPS13
Ceiling: 055
 Stainless Steel Satin with plexiglass, 3 fluorescent tubes
Floor: 6768 Griffon
Handrail: K7 Stainless Steel Mirror
Mirror: Full Height /Half Width

Stranice: plastifikacija PPS 13
Plafon: O55
 Satinirani Inox i pleksiglas, 3 fluo-svetiljke
Pod: 6768 Griffon
Rukohvat: K7 Sjajni Inox
Ogledalo: Celom visinom/polovina širine



Walls: Laminate (DU) 5610 HG
Ceiling Type: 055
 Stainless Steel Mirror and plexiglass, 3 fluorescent tubes
Floor: 6801 Black
Handrail: K5 Stainless Steel Mirror
Mirror: Half Height/Full Width

Stranice: Laminat (DU) 5610 HG
Plafon: O55
 Satinirani Inox i pleksiglas, 3 fluo-svetiljke
Pod: 6801 Crni
Rukohvat: K5 Sjajni Inox
Ogledalo: Polovina visine/cela širina

Doors | Vrata

Landing door | Prilazna vrata



Type: Landing door
AISI 441 brushed stainless steel (RAL 7032 is optional)

Tip: Prilazna vrata
Satinirani inox AISI 441 ili boja RAL 7032

COP | Registar kutija
upravljačka lamela



Type: FH-FM
Satin stainless steel, flat mounted, full height panel, dot matrix display, overload + buzzer, emergency remote
- alarm system
- door open-door close (optional)
- fan
- voice announcement (optional)

Tip: FH-FM
Satinirani Inox, ugradna-poravnata sa stranicom celom visinom kabine, matrični displej, zvučni I svetlosni signal preopterećenja.
Dugmad:
- alarm
- govorni uredjaj (opcija)
- otvaranje vrata
- zatvaranje vrata (opcija)
- ventilator (opcija)
- govorna najava stanica (opcija)

LOP | Pozivne kutije

Flat mounted, satin stainless steel | Ravna ugradna, satinirani inox



Type: FM90 - 1
one button

Tip: FM90 - 1
Sa jednim dugmetom



Type: FM90 - 2
two buttons (full selective)

Tip: FM90 - 2
Sa dva dugmeta (sabiranje u oba smeru)



Type: FM90 - 1D
dot matrix display, one button

Tip: FM90 - 1D
matrični displej, sa jednim dugmetom



Type: FM90 - 2D
dot matrix display, two buttons (full selective)

Tip: FM90 - 2D
matrični displej, sa dva dugmeta (sabiranje u oba smeru)



Type: SM - 1
one button

Tip: SM - 1
sa jednim dugmetom



Type: SM - 2
two buttons (full selective)

Tip: SM - 2
sa dva dugmeta (sabiranje u oba smeru)



Type: SM - 1D
dot matrix display, one button

Tip: SM - 1D
matrični displej sa jednim dugmetom



Type: SM - 2D
dot matrix display, two buttons (full selective)

Tip: SM - 2D
matrični displej, sa dva dugmeta (sabiranje u oba smeru)

Buttons | Pozivna dugmad



BAS241 Floor button, tactile, braille
Spratno taktilno dugme sa brajovom azbukom **BAS241**



BAS241 Door open button, tactile, braille
Dugme otvaranja vrata taktilno dugme sa brajovom azbukom **BAS241**



BA201 Key switch
Kontakt sa klučcem **BA201**



BAS251 PR button, tactile, braille
Spratno taktilno dugme sa brajovom azbukom **BAS251**



BAS251 Alarm button, tactile, braille
Alarm taktilno dugme sa brajovom azbukom **BAS251**

Indicators | Indikatori



Type: HL-FM Flat mounted, dot matrix display
Tip: HL-FM Ravna, ugradna sa matričnim displejom



Type: HL-FM Flat mounted, TFT display L2
Tip: HL-FM Ravna, sa TFT displejom L2



Type: HL-SM Surface mounted, dot matrix display
Tip: HL-SM Nadgradna, sa matričnim displejem

Display | Displeji



Type: M8 RED OR BLUE DISPLAY Dot matrix display
Tip: M8 Crveni ili plavi matrični displej



Type: M5 RED OR BLUE DISPLAY Dot matrix display
Tip: M5 Crveni ili plavi matrični displej



Type: TFT display L1 2,8"
Tip: TFT displej L1 2,8"



Type: TFT display L2 5"
Tip: TFT displej L2 5"



Type: TFT display L3 7"
Tip: TFT displej L3 7"

Handrails | Rukohvati



K2



K4

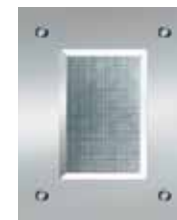


K3



K7

Ceilings | Plafoni



Type: 03 Stainless Steel Mirror, 4 spots. Available only at A310, L320 cabins
Tip: 03 Sjajni inox, 4 spota. Dostupan samo za A310 i L320 kabine

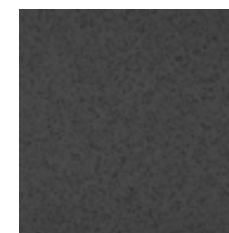


Type: 010 Stainless Steel Satin Available only at L310 cabin
Tip: 010 Satinirani inox Dostupan samo sa L310 kabinom



Type: 055 Stainless Steel Satin and plexiglass, 3 fluorescent tubes
Tip: 055 Satinirani inox i pleksiglas, 3 fluorescentne cevi

Floors PVC | Podovi



Type: 6768 Griffon
Tip: 6768 Griffon



Type: 6801 Black
Tip: 6801 Crni



Type: 6674 Linoleum
Tip: 6674 Linoleum



GREEN FEATURES

The green solution provides excellent ride quality, while reducing up to 60% energy consumption.

"ZELENE" KARAKTERISTIKE

"Zeleno" rešenje obezbedjuje odličan kvalitet vožnje, dok u isto vreme smanjuje i do 60% potrošnju energije.

UPTO
IDO

60%

LESS ENERGY
MANJA POTROŠNJA

Regeneration Drive

The regeneration unit has been developed in order to recover excess energy from the lift when the empty car travels upwards or the fully loaded car travels downwards. KLEEMANN regeneration unit produces clean energy which does not cause any problems to the network.

Regenerativni pogon

Uredjaj za regeneraciju razvijen je kako bi iskoristio višak energije koji se dobija prilikom kretanja prazne kabine lift na gore ili u punoj meri opterećene kabine na dole. KLEEMANN uredjaj za regeneraciju proizvodi čistu energiju koja ne dovodi do bilo kakvih problema na mreži.

Stand By Mode

With the Stand By Mode, when the lift is not in use, You save energy for the electronic subsystems.

Režim mirovanja

Sa Režimom mirovanja, kada se lift ne koristi, štedite energiju za elektronske podsisteme.



Energy Efficiency

Thanks to the energy reduction features Line 2000 reaches A-class for low energy consumption according to VDI 4707-1.

Energetska efikasnost

Zahvaljujući karakteristikama za smanjenje energije Line 2000 se svrstava u A-klasu za nisku potrošnju energije u skladu sa VDI 4707-1.



x 20

TIMES
LONGER
PUTA
DUŽE

Led Lighting

Led Lighting assures less energy consumption and it lasts 20 times longer comparing to standard lighting.

Led osvetljenje

Led osvetljenje osigurava manju potrošnju energije i traje 20 puta duže u poredjenju sa standardnim osvetljenjem.





CILJNA KOMANDA

Ciljna komanda povećava efikasnost u korišćenju više liftova u bateriji i skraćuje vreme čekanja. Putnici unose svoju destinaciju preko upravljačkih panela na svim prilazima. Na displeju na panelima se zatim pokazuje oznaka lifta koji putnik za taj sprat treba da koristi. Postoje dve moguće opcije u skladu sa analizama saobraćaja u zgradi.

• Zgrade sa visokim intenzitetom saobraćaja u prizemlju

PC paneli osetljivi na dodir su postavljeni samo u prizemlju dok se na ostalim spratovima koriste standardni pozivi. Broj panela osetljivih na dodir zavisi od broja liftova.

• Zgrade sa visokim intenzitetom saobraćajem između različitih spratova

Paneli osetljivi na dodir se postavljaju na svaki sprat. Informacije o destinaciji dobijene preko panela PC šalju se u centralni procesor koji komunicira sa kontrolerom svakog lifta kako bi distribuirao pozive na najefikasniji način.



DESTINATION CONTROL

The destination control increases the efficiency of the lift application and reduces the waiting time.

The passengers enter their destination in the panel, which responds by indicating the lift that is going to be used. There are two options available according to the traffic analysis of the building.

• Buildings with high traffic density on the ground floor

The touch panel PC's are installed only at the ground floor while at the other floors conventional operating panels are used.

The number of the touch panels to be installed depends on the number of lifts.

• Buildings with high traffic density between multiple floors

The touch panels PC's are installed at each floor.

The destination information from the touch panel PC's are sent to a central processor that communicates with each lift controller to distribute in the most effective way the landing calls.

Advantages

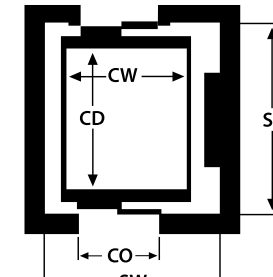
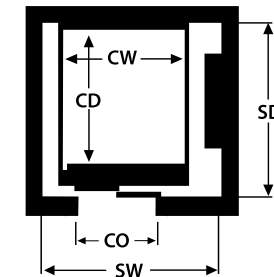
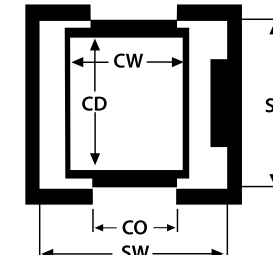
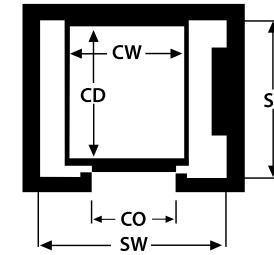
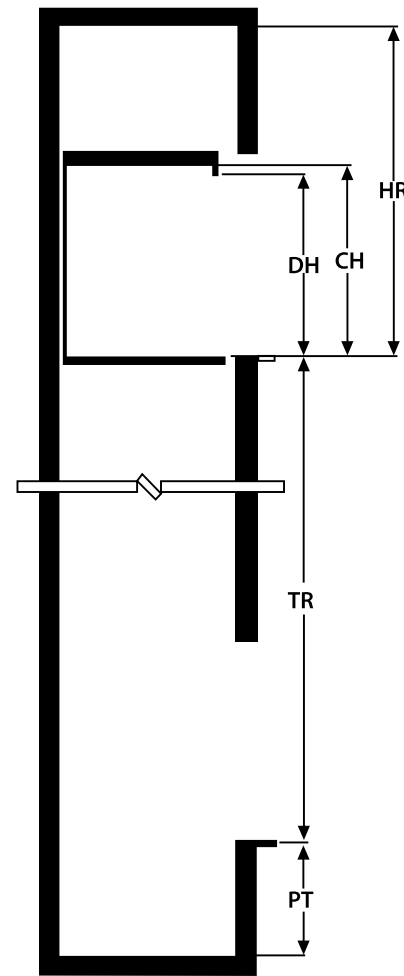
- Controlled travel of the lifts
- Reduced travel time via carefully targeted distribution of the passengers
- Reduced waiting time
- A more efficient utilisation of the individual lifts in comparison to conventional controls
- Modern and future-oriented

Prednosti

- Režirana (vodjena) upotreba lifta
- Smanjeno vreme vožnje preko pažljivo ciljane distribucije putnika
- Smanjeno vreme čekanja
- Efikasnije korišćenje pojedinačnih liftova ako se poredi sa konvencionalnim komandama
- Moderna i napredno orjentisana

	Line 2000
Rated Load (Kg) Nazivna nosivost (kg)	375-1000
Suspension Vešanje	2:1
Machine Room mašinski prostor	MRL (MR)
Max travel (m) Maks. visina dizanja (m)	45
Max Rated Speed (m/s) Maks. nazivna brzina (m/s)	1,6
Pit depth (mm) Dubina jame (mm)	v≤1.0 m/s 1100 v=1.6 m/s 1250
Clear Headroom (mm) Vrh voznog okna (mm)	v≤1.0 m/s 3400* v=1.6 m/s 3600*
Entrances Prilazi liftu	Single entrance or through type car jedan prilaz ili prolazna kabina
Machine Pogonska mašina	KLEEMANN RN
Controller Upravljanje	KLLC100

* For internal car height 2100mm
* Za unutrašnju visinu kabine 2100mm



For the full range of your options, you are kindly advised to check your KLEEMANN Cabins brochure, visit www.designyourlift.com or contact your sales engineer.

Kako bi se upoznali sa punim obimom vaših mogućnosti, najljubaznije vam preporučujemo da pogledate svoj KLEEMANN Cabins katalog, posetite www.designyourlift.com ili kontaktirate svog menadžera prodaje

Line 2000

SINGLE ENTRANCE NEPROLAZNA KABINA	Rated Load (Kg) Nazivna nosivost (kg)	375 5 persons / osoba		450 6 persons / osoba		630 8 persons / osoba		800 10 persons / osoba		1000 13 persons / osoba			
	Car Dimensions (mm) (CW x CD) Dimenzije kabine (mm)	900x1200		1000x1250		1100x1400		1350x1400		1100x2100		2100x1100	1400x1600
Door type* Tip vrata*	C2	T2	T2		C2	T2	T2		T2		C2	T2	
Door CO (mm) Svetli otvor vrata (mm)	700	800	800		700	800	900		900	1000	1000	1200	1000
Shaft dimensions (mm) (SW x SD) Dimenzije okna (mm)	1600x1500	1550x1580	1600x1630		1700x1780	1700x1780	1950x1780		1650x2480	1850x2480	2700x1400	2700x1400	2000x1950

THROUGH-TYPE CAR PROLAZNA KABINA	Rated Load (Kg) Nazivna nosivost (kg)	375 5 persons / osoba		450 6 persons / osoba		630 8 persons / osoba		800 10 persons / osoba		1000 13 persons / osoba			
	Car Dimensions (mm) (CW x CD) Dimenzije kabine (mm)	900x1200		1000x1250		1100x1400		1350x1400		1100x2100		2100x1100	1400x1600
Door type* Tip vrata*	C2	T2	T2		C2	T2	T2		T2		C2	T2	
Door CO (mm) Svetli otvor vrata (mm)	700	800	800		700	800	900		900	1000	1000	1200	1000
Shaft dimensions (mm) (SW x SD) Dimenzije okna (mm)	1600x1610	1550x1750	1600x1800		1700x1950	1700x1950	1950x1950		1650x2650	1850x2650	2700x1510	2700x1510	2000x2150

* C2 = 2-panel central opening, T2 = 2-panel telescopic opening
* C2 = 2-krilna centralna, T2 = 2-krilna bočna teleskop


kleemannlifts.com

While every effort has been made to ensure information accuracy, KLEEMANN bears no responsibility for typographic errors or omissions.

S obzirom da su preduzete sve mere da se obezbedi tačnost informacija KLEEMANN ne snosi odgovornost za tipografske greške i propuste

Copyright © KLEEMANN 2018

